

# LED SURFACE DOWN LIGHT



## LOI-C3001

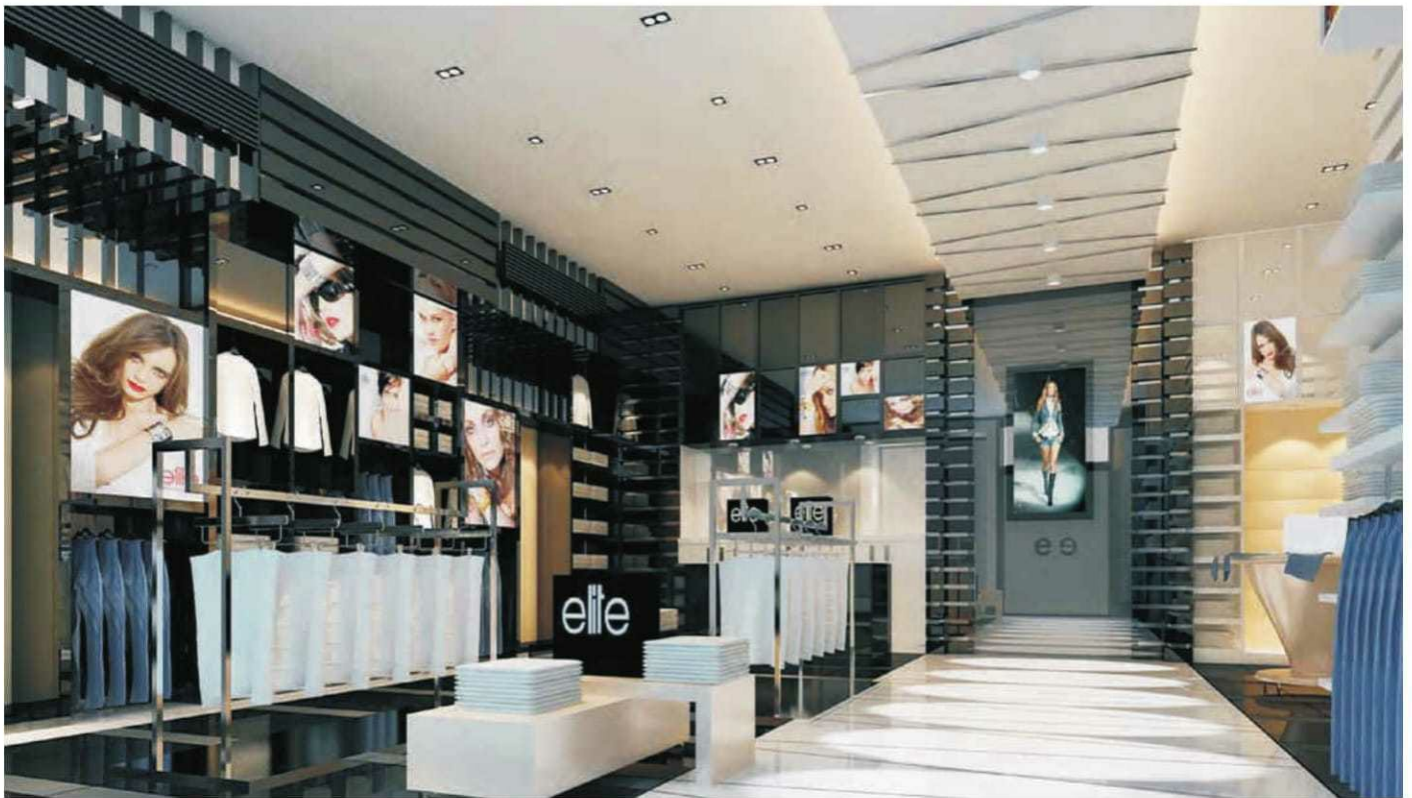


### Parameter table

| Model No.     | Power | Luminous Flux | CRI       | LED TYPE | LED QTY | EMITING ANGLE | Light Size(mm)<br>( $\phi$ xH)(LxWxH) | Hole size(mm) |
|---------------|-------|---------------|-----------|----------|---------|---------------|---------------------------------------|---------------|
| LOI-C3001-7W  | 7W    | 540-620LM     | $\geq 80$ | COB      | 1PC     | 23°/38°       | $\phi$ 60X95<br>$\phi$ 60X185         | $\phi$ 20     |
| LOI-C3001-12W | 12W   | 960-1100LM    | $\geq 80$ | COB      | 1PC     | 15°/24°/38°   | $\phi$ 70X100<br>$\phi$ 70X200        | $\phi$ 20     |
| LOI-C3001-20W | 20W   | 1600-1800LM   | $\geq 80$ | COB      | 1PC     | 15°/24°/38°   | $\phi$ 100X130<br>$\phi$ 100X200      | $\phi$ 20     |
| LOI-C3001-30W | 30W   | 2400-2700LM   | $\geq 80$ | COB      | 1PC     | 15°/24°/38°   | $\phi$ 120X165                        | $\phi$ 20     |

### Parameters

|          |                       |              |  |
|----------|-----------------------|--------------|--|
| Voltage  | 85-265V AC            | Power factor | $> 0.9$  |
| Material | Aluminum + Glass      | Efficiency   | $> 85$   |
| LED Chip | CITIZEN LED / LEDTEEN | Life Span    | 30000Hrs   |
| Rated IP | IP20. For indoor use  | CCT          | White 6000K<br>Natural White 4000K<br>Warm White 3000K |



# LOI-C3001

## Product details:

### Color temperature



3000K

4000K

6000K



### Stent

Prevent high voltage shore circuit  
High temperature resistance 120°



### Chip

JAPAN CITIZEN COB LED chip, high CRI > 80,  
high luminous efficient > 80m/w long  
lifespan > 50000 hours



### Reflector

Professional secondary  
optical design, perfect  
refraction



### Lens & Housing

High transmittance and  
beautifully designed